



Frodsham Solar

Environmental Statement: Volume 3

Chapter 4 Figures

May 2025



PINS Ref: EN010153

Document Ref: EN010153/DR/6.3

**Planning Act 2008; and Infrastructure Planning (Applications:
Prescribed Forms and Procedure) Regulations Regulation 5(2)(a)**

Revision P01

Document Control

| Revision | Date | Prepared By | Reviewed / Approved By |
|----------|----------|-------------|------------------------|
| P01 | May 2025 | S Kaye | A Russell |
| | | | |
| | | | |

© AXIS P.E.D. Ltd 2025. All rights reserved.

This document and its accompanying documents contain information which is confidential and is intended only for the use of the client. If you are not one of the intended recipients any disclosure, copying, distribution or action taken in reliance on the contents of the information is strictly prohibited.

Unless expressly agreed, any reproduction of material from this document must be requested and authorised in writing from AXIS P.E.D. Ltd. Authorised reproduction of material must include all copyright and proprietary notices in the same form and manner as the original and must not be modified in any way. Acknowledgement of the source of the material must also be included in all references.

Prepared For:
Frodsham Solar Ltd

Prepared By:

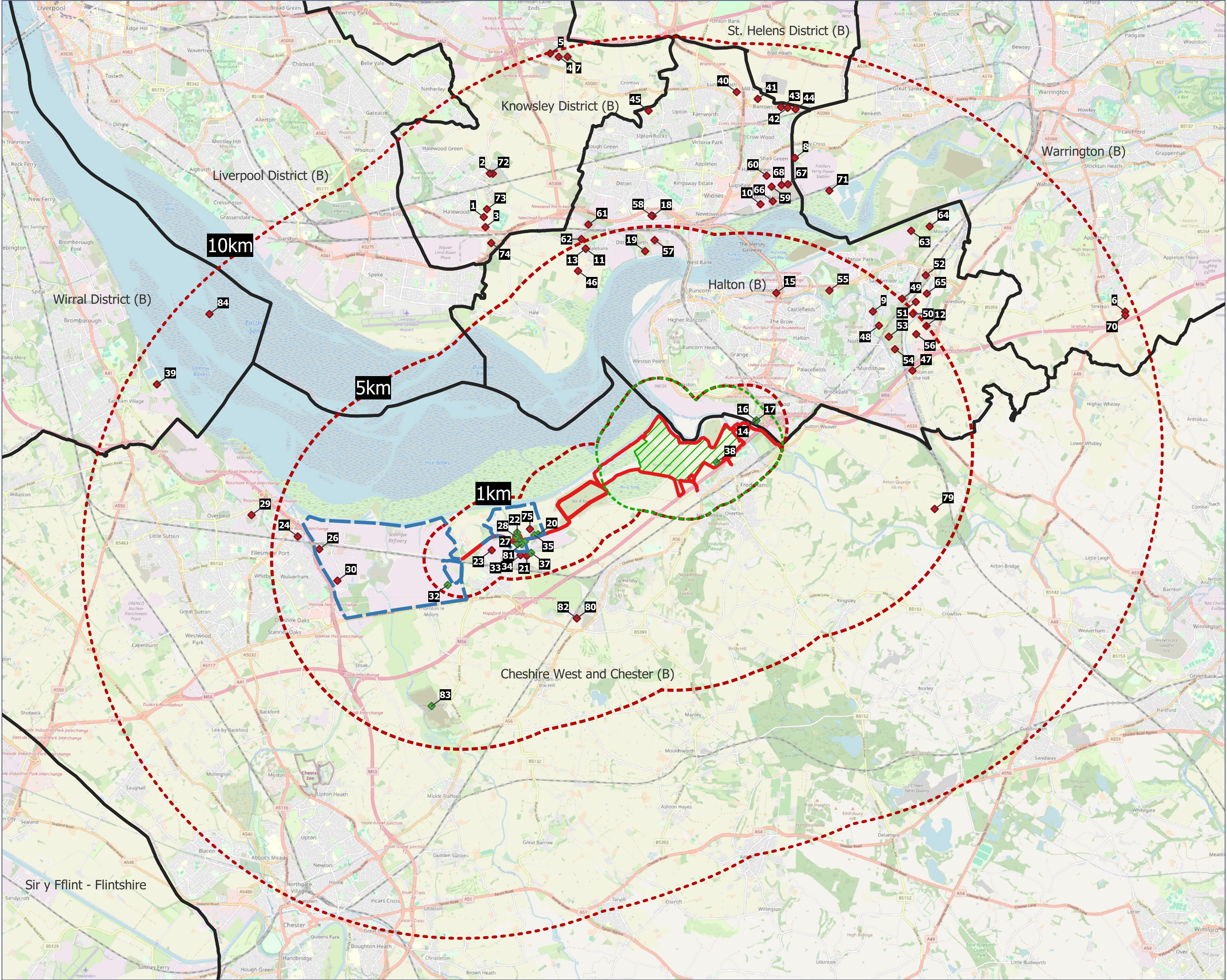


Well House Barns, Chester Road, Bretton, Chester, CH4 0DH
1st Floor, Barfield House, Alderley Road, Wilmslow, SK9 1PL
Maling Exchange, Studio 307, Hoults Yard, Walker Road, Newcastle Upon Tyne, NE6 2HL

T: 0344 8700 007
enquiries@axis.co.uk
www.axis.co.uk

CONTENTS

| | |
|-------------------|---|
| Figure 4-1 | Long List and Short List Cumulative Schemes – 10km |
| Figure 4-2 | Long List and Short List Cumulative Schemes – 1km |
| Figure 4-3 | Short List Cumulative Schemes – 1km |



- Order Limits
- Order Limit Buffers
- Solar Array Development Area (SADA)
- 1km SADA Buffer
- Cumulative Schemes
 - Long list only
 - Short List
- CWACC Allocations

Case Reference: EN010153
Document Reference: EN010153/DR/6.3
Regulation 5(2)(a) Infrastructure Planning (Applications: Prescribed Forms and Procedure) Regulations 2009



0344 8700 007
axis.co.uk
Document



Environmental Statement: Volume 3

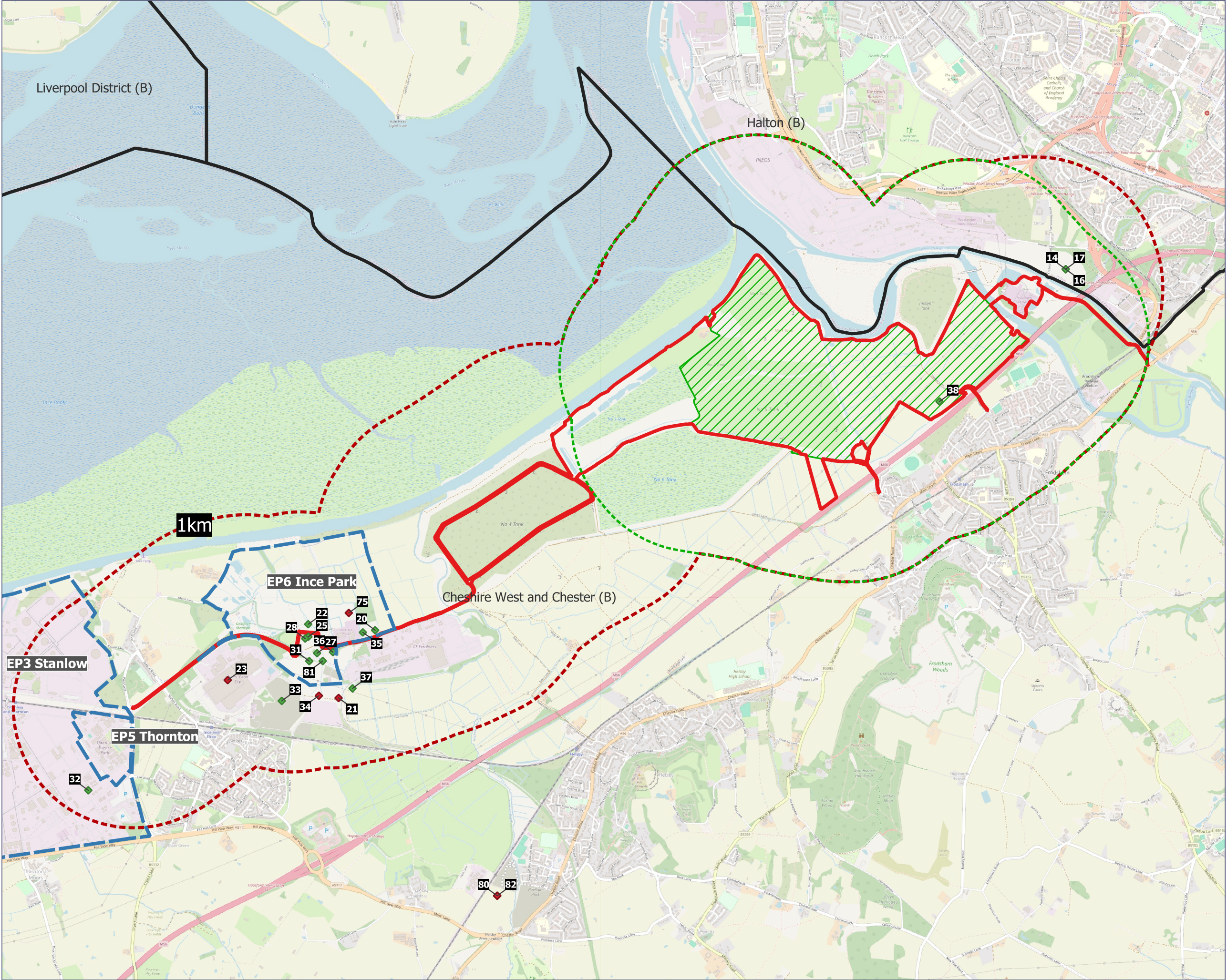
Project
FRODSHAM SOLAR

Figure Number
Figure 4-1

Figure Title
Long List and Short List Cumulative Schemes - 10km

Scale
1:95000@A3

Date
May 2025



- Order Limits
- 1km Draft Order Limit Buffer
- Solar Array Development Area (SADA)
- 1km SADA Buffer

Cumulative Schemes

- Long list only
- Short list
- Short List

- CWACC Allocations

Case Reference: EN010153
Document Reference:
EN010153/DR/6.3
Regulation 5(2)(a) Infrastructure
Planning (Applications: Prescribed
Forms and
Procedure) Regulations 2009



0344 8700 007
axis.co.uk
Document



Environmental Statement: Volume 3

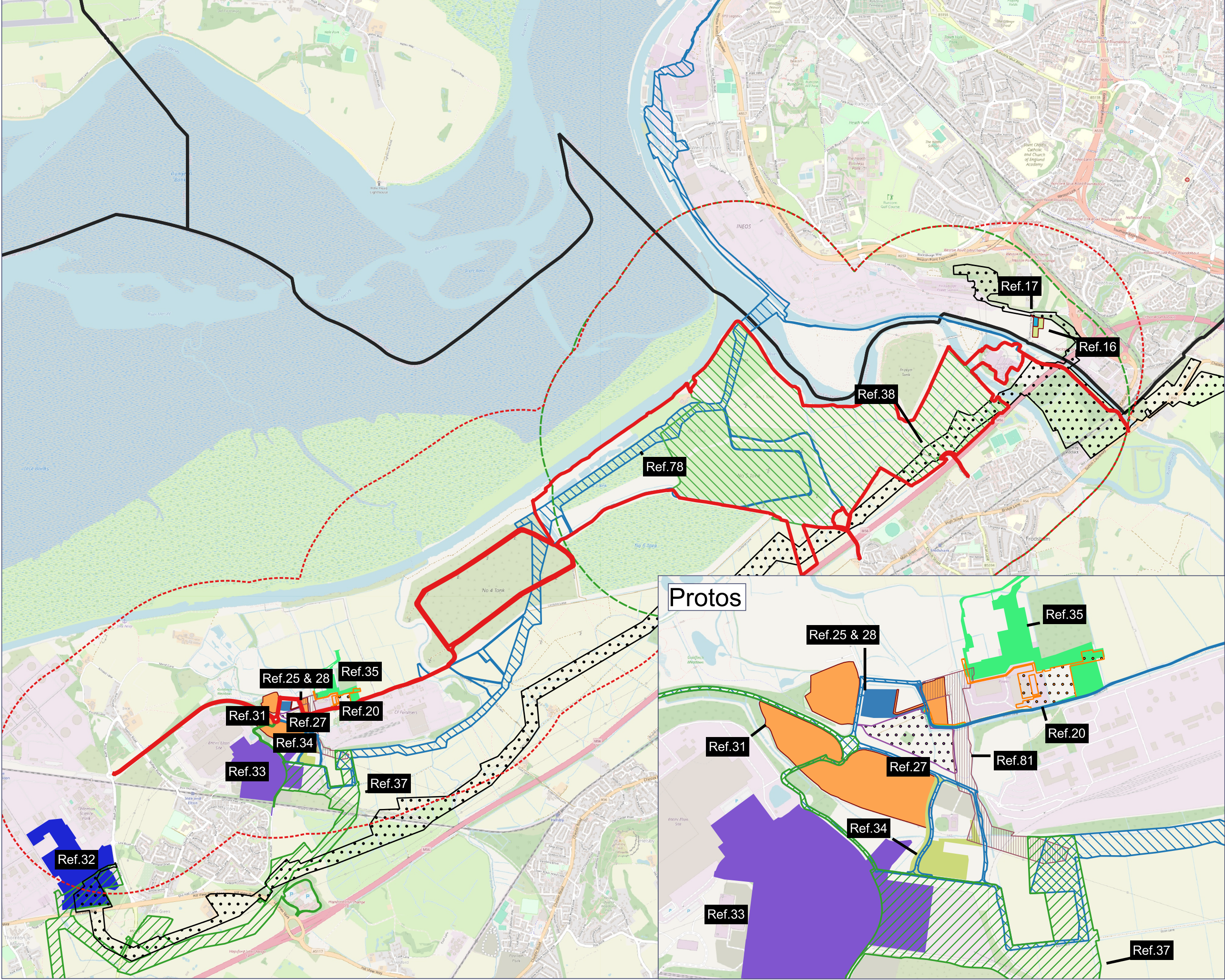
Project
FRODSHAM SOLAR

Figure Number
Figure 4-2

Figure Title
**Long List and Short List
Cumulative Schemes - 1km**

Scale
1:30000@A3

Date
May 2025



- Order Limits
- 1km Order Limits Buffer
- Solar Array Development Area (SADA)
- 1km SADA Buffer
- Local Authority Boundary
- Halton Planning Reference Boundaries**
 - Ref.16 - 21/00565/FUL
 - Ref.17 - 23/00193/FUL
- NSIPs Planning Reference Boundaries**
 - Ref.37 - EN70007
 - Ref.38 - EN60006
- CWAc Planning Reference Boundaries**
 - Ref.20 - 24/02935/SCO
 - Ref.25 - 19/03489/FUL & Ref.28 - 21/02848/S73
 - Ref.27 - 20/04396/FUL
 - Ref.31 - 21/04076/FUL
 - Ref.32 - 21/04091/FUL
 - Ref.33 - 22/03693/FUL
 - Ref.34 - 23/01239/FUL
 - Ref.35 - 24/00261/FUL
 - Ref.78 - 24/01171/SCO
 - Ref.81 - Protos West AGI

Refer to Figure 4-2 for the location of project Ref.83



0344 8700 007
axis.co.uk
Document

Environmental Statement: Volume 3

Project **FRODSHAM SOLAR**

Figure Number **Figure 4-3**

Figure Title **Short List Cumulative Schemes - 1km**

Scale **1:30000@A3**

Date **May 2025**

